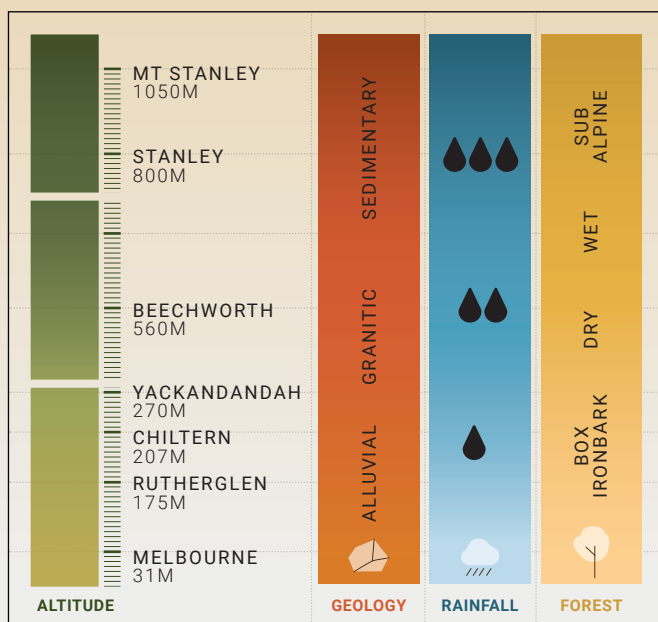


A delight in every season

ALPINE FOOTHILLS OF NORTH-EAST
ONLY 8KMS FROM BEECHWORTH



CLIMB THE STEPS OF INDIGO Indigo with Altitude

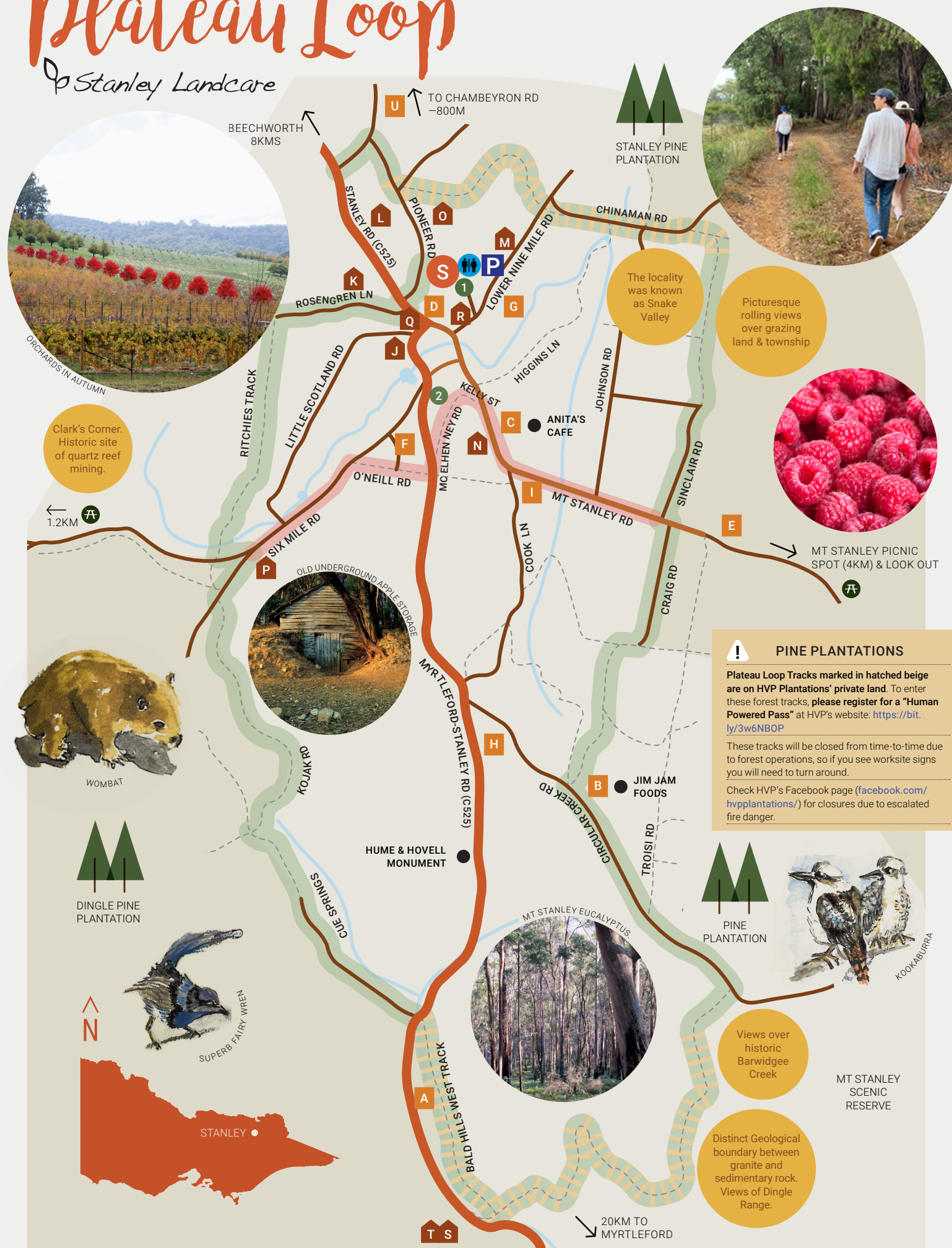


This project has been made possible with funding support from the Victorian Government and Commonwealth Government under the Commonwealth-State Disaster Recovery Funding Arrangements



Plateau Loop

Stanley Landcare



Welcome to Stanley

You are invited to explore our beautiful Stanley Plateau on Victoria's alpine foothills, just 8kms from historic Beechworth in NE Victoria.

This brochure and the explanatory signage provide a valuable resource to explore the rich diversity of this environment and the dynamic farming culture. The combination of altitude, geology/soils and high rainfall merge to create a unique pocket in the north-east.

Pick up the DELWP brochures from our community managed Post Office or at the trail head for details about local bird life, fungi, wildflowers and more.

Wander the township and surrounding bush tracks: spot our special flora and fauna. For the more adventurous, explore the 20km Plateau Loop winding around orchards, farms and through bushland forests and plantations. Drop into the many farm gate venues to sample and purchase exceptional locally grown produce.

Or simply find your special spot on the Plateau to create a memorable picnic. Enjoy the views and the tranquility of our gentle way of life.



KEY

S START POINT	1 RECREATION RESERVE
2 SHORTCUT LOOP DISTANCE 3.4KM	2 SPRINGDITCH WETLANDS
PLATEAU LOOP DISTANCE 20KM 6 HOURS	HVP LAND
MAIN THROUGH ROAD C525	PICNIC AREA
MAIN PAVED ROADS	SIGNIFICANT PLACE / REFRESHMENTS
TRACK/ 4WD TRACK	FARM GATE
MAIN GRAVEL ROADS	STAYS
	PUBLIC TOILETS
	P PARKING

Walking Stanley is implemented by the Stanley Landcare Group and kindly auspiced by Quercus Beechworth.



Stanley Landcare



MAGNIFICENT STANLEY CHESTNUT TREE. THIS REGION IS THE MOST INTENSIVE CHESTNUT GROWING AREA IN AUSTRALIA.

TAKE CARE

At all times stay on designated paths

Watch for fallen debris and snakes

Seasonal changes may make some paths unsafe

Blue Gum Gully and Long Dick's Gully - wheelchair friendly

HELP US PROTECT OUR ENVIRONMENT

Keep your dog on the lead and on the path

Picnic in designated areas

Please use public conveniences provided at the Recreation Reserve.

Take out what you take in (no litter)

Don't remove any flora or fauna

No fires

For emergencies, dial 000



Farmgate

A Snowline Fruits

507 Myrtleford-Stanley Rd
via farmtucker.com.au

B Jim Jam Foods

89 Circular Creek Rd
via jimjam.com.au

C Hillsborough Quality Nuts / Anita's

105 Mt Stanley Rd
via [facebook](https://www.facebook.com)

D Sinclair Orchard Shop

1 Beechworth-Stanley Rd
via [facebook](https://www.facebook.com)

E High Grove Berries

227 Mt Stanley Rd
via highgroveberries.com.au

F Maison Renoux — Specialist Providore For Local Cider Vinegar, Terrines and More

22 Thompson Lane
via maisonrenoux.com.au

G Black Barn Farm

Organic Fruit & Berry Orchard
60 Lower Nine Mile Rd
via balckbarnfarm.com.au

H Wendy's Chestnuts

279 Myrtleford-Stanley Rd

I Tilley's Blooms (Flower Farm)

Seasonal cut flowers
via tilleysblooms.com

U Europa Gully Orchards

"Pick Your Own Apples" — In
season from February to June.
Chambeyron Rd, Stanley.

Accommodation

J Bloomfield Walnut Grove

1 Little Scotland Rd
via bloomfieldwalutgrove.com.au

K Wee Varrich

40 Rosengren Lane
via [AirBnB](https://www.airbnb.com)

L Planetrees Estate

819 Stanley Rd
via planetrees.com.au

M Stanley Goose Country Cottage

63 Lower Nine Mile
via stanleygoose.com.au

N The Ninth Mile Vineyard Retreat

92 Mt Stanley Rd
via [the ninth mile.com](http://theninthmile.com) / [AirBnB](https://www.airbnb.com)

O Blue Gum Church

64 Pioneer Rd
via [AirBnB](https://www.airbnb.com)

P Little Farm House

133 Six Mile Rd
via littlefarmhouse.wordpress.com

Q The Stanley Pub

6-12 Myrtleford-Stanley Rd
via stanleypub.com.au

R The Old Stanley Sun

3 Mt Stanley Rd
via [AirBnB](https://www.airbnb.com)

S Bald Hills House

570 Myrtleford-Stanley Rd
via baldhillshouse.com

T Sawyers Lodge

570 Myrtleford-Stanley Rd
via baldhillshouse.com

Village Walks

Stanley Landcare



THE ATHENAEUM IN SNOW

Please feel free to wander. All the shaded area in the Village is suitable for walking.



STANLEY ORCHARDS

Enjoy the walks

THERE ARE FIVE KEY INFORMATION THEMES AROUND THE VILLAGE.

1 Birds

The regrowth forests of Stanley provide habitat for a range of over 75 birds; however, our focus is upon the most common 25. Bird signage can be found in two locations identified on the map. One in Blue Gum Gully, the other in the Upper Springditch. Depending upon the time of day, many different birds can be either heard or seen. Walk and discover for yourself.

2 Ecology

Historically, the regionally unique characteristics of Stanley (altitude, soils, rainfall) assisted in the development of a distinctive ecology. The early explorer and miner's writings about the district paint an extraordinary and alluring picture. The region and this plateau have been in constant change since the arrival of European settlers. Today the regrowth forests still provide beauty. A brief explanation of these changes and a window into the dimensions of the old forests are offered from the Walking Stanley seat and long view in McElhenney Rd.

3 Mining

The intensity and area of activity bears legacy to much hard physical work which took place in Stanley during gold mining years. It is also a stunning testament to the scale, ignorance and forcefulness of mining operations from times gone by, where pristine environments were trashed, and mine sites denuded. A walk down Higgins Lane offers the visitor a window into the various techniques used for mining amidst the regrowth forest. At the northern end, walkers will be close to the site of the first diggings.

4 Fire

The story of fire on the Plateau is one that is matched by volunteerism, passion and firm local knowledge of land and the resources. An explanation of this story can be found adjacent the 'Burning Leaf' sculpture, which is atop the Fire Fighters Memorial adjacent the Springditch wetlands. The modified landscape of Stanley has made it more vulnerable to fire, and our local CFA is mindful that constant vigilance and application of First Nations 'cool-burning' techniques are key factors. Climate Change brings with it greater challenges and the need to prepare for and respect the power of fire in this landscape is critical.

5 People and Place

Rich layers of Stanley social history extend back to Waywurru First Nations communities who valued the plateau for summer hunting. The 1850's saw colonial and foreign gold miners swell population to 5000 plus, creating four towns and more than 900 buildings. Extant period buildings include the Public School, the Athenaeum, the Police Lockup (on Collins Street), the present pub, old General Store. Rich sedimentary soils attracted farmers growing fruit, potatoes, wine grapes and nuts beside plantation timbers. From the late 19C to the early 1970s, Stanley apples were prized exports to Europe, the 'King Cole', its most famous variety and widely grown across the plateau.

The Stanley community of approx. 320 people continues as a proud, thriving, multi-generational tapestry with a unique country lifestyle. Tourism operators value the beautiful scenery and challenging terrain attracts cyclists, classic car motorists and many others. Hard work, creativity and eccentricity abound!